



# Fibre Duct Raceway

Better Technology through Innovation

**MADE TO CONNECT**



# Welcome to HellermannTyton

We are Made to Connect

Hellermann

tyton

HellermannTyton is an established leader in the design, development and manufacture of innovative network infrastructure solutions for both internal and external copper and fibre networks.

At HellermannTyton we pride ourselves on being a leading solutions provider, offering quality end to end network systems, industry and technical expertise and first-class customer service and support.

Our extensive LAN product range covers Cat6A and Cat6 solutions as well as fibre connectivity and a comprehensive range of accessories. To strengthen our range further, all of our copper and fibre solutions are available in our world leading RapidNet pre-terminated format.

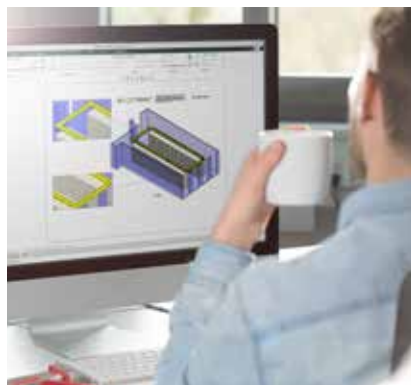
### Market and Industry Knowledge

Selecting HellermannTyton for your network infrastructure gives you peace of mind, knowing that the system can be installed easily, will perform well first time, and will continue to operate at the highest levels throughout its life.

In the unlikely event that there are any difficulties, you have the reassurance of the UK technical support and a warranty that is backed by the larger HellermannTyton Group with a long history in the industry. Ultimately, the choice of HellermannTyton significantly reduces the risk of your project.

### Benefits of HellermannTyton

- Quality of the products, designs and materials
- Credibility of our 25-year system warranty
- Over 30 year of industry knowledge
- UK design capability
- Environmentally responsible
- Established UK manufacturer





The future of data centre cable management system starts with our state-of-the-art Fibre Duct Raceway system.

In the dynamic world of data communication, ensuring the optimal performance and protection of your optical fibre cables is paramount. HellermannTyton's Fibre Duct Raceway is the ultimate solution designed to revolutionise how you manage and safeguard your critical infrastructure.

## Make the right choice

The capacity table below shows the recommended number of cables to avoid crushing, maintain bend radius and ensure smooth maintenance. This is not the ducts maximum capacity.

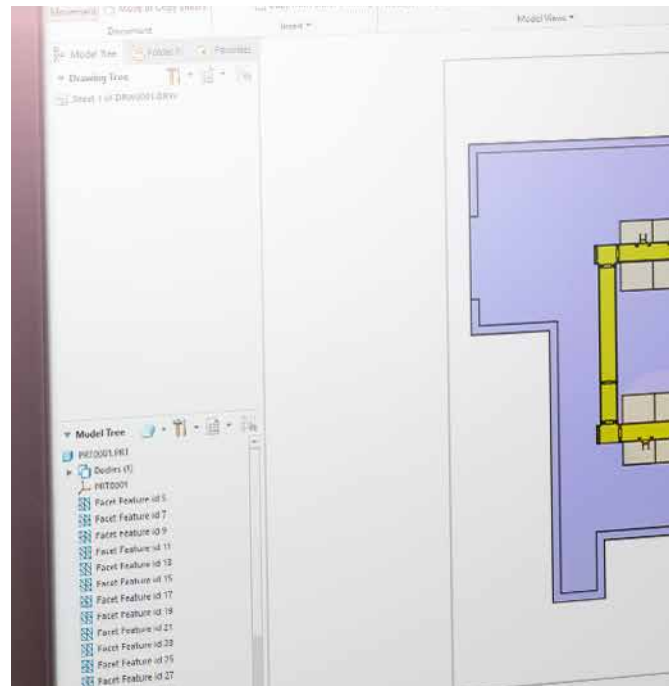
Selecting the correct size from day one is essential for supporting your requirement not only for today but for tomorrow and beyond. Consider your future equipment and make allowances for additional cabling needs.

DUCT SIZE	MM	50 x 50			100 x 100			220 x 100			300 x 100			600 x 100		
	INCHES	2 X 2			4 X 4			8 X 4			12 X 4			24 X 4		
Optical cable size (mm)		3	2-2.4	1.6-2	3	2-2.4	1.6-2	3	2-2.4	1.6-2	3	2-2.4	1.6-2	3	2-2.4	1.6-2
Straight duct		120	155	265	500	700	1200	1100	1500	2500	1500	2100	3600	3000	4200	7200
Over-the-top outlet		100	120	200	300	400	700	-	-	-	-	-	-	-	-	-
Duct with ramp-off		-	-	-	300	400	700	720	1000	1700	-	-	-	-	-	-
Vertical tee-straight-through		-	-	-	500	700	1200	300	400	700	-	-	-	-	-	-
Vertical tee-downspout- drop		-	-	-	500	700	1200	500	700	1200	-	-	-	-	-	-

Convuluted tubing	Split 200 mm Ø			Split 38 mm Ø			Split 50 mm Ø			50 x 50 square		
Optical cable size (mm)	3	2-2.4	1.6-2	3	2-2.4	1.6-2	3	2-2.4	1.6-2	3	2-2.4	1.6-2
Tubing capacity	10	12	20	24	30	50	60	80	135	120	155	265

# Design & Training

Our experienced team offers comprehensive fibre duct raceway design solutions and expert training to ensure the success of your project.



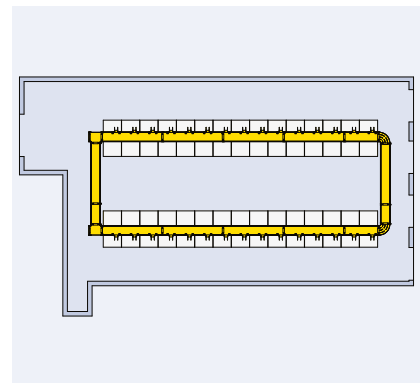
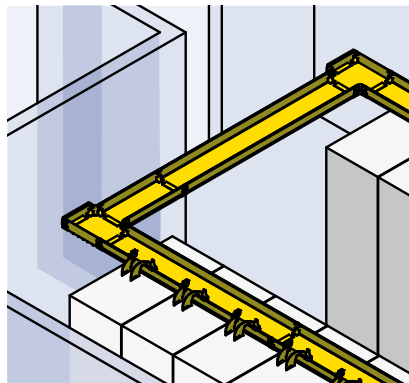
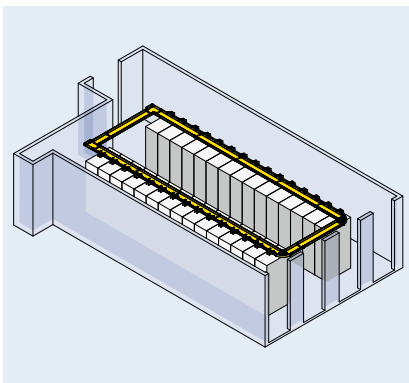
HellermannTyton offer design services to support your fibre duct raceway requirements.

## Design Service

Providing a floor plan with details of cabinets and any potential obstructions allows HellermannTyton to provide a fibre duct raceway design which will include a drawing and bill of materials for your consideration.

## Made to measure

To help minimise waste, HellermannTyton will design and supply exactly what is needed, reducing the amount of excess materials on site. Reducing waste material helps improve sustainability across your project.





## Product Training

We pride ourselves on the broad spectrum of training offered to our customers. We offer full product familiarisation and installation training for the fibre duct raceway solution. Whether you are an engineer or an end user, you will gain a detailed understanding of the product range and how to install and inspect your system.

“ *It's the personal approach which sets you apart from others as relationships have been built and to take the time to meet with us face to face to discuss updates and latest products shows just how much you care about your clients.* ”

Customer Satisfaction Survey 2024

## Product Compatibility and Ease of Use

Our products are designed for ease of use and compatibility, not only with our own products in any given application, but any other product installed in the network. All products are supplied with detailed installation guides or with QR codes to access full installation instructions digitally from a mobile device or tablet.



### Expertise at your fingertips...

We have a knowledgeable team with over 30 years experience to work with you to configure the fibre duct raceway system you're looking for.

Tel: +44 (0) 1604 707420

Email: [sales@htdata.co.uk](mailto:sales@htdata.co.uk)

## Choosing a Fibre Duct Raceway System

Fibre Duct Raceway is a robust, scalable cable management system engineered specifically for organising and protecting optical fibre cables in the data centre environment.

Constructed with precision, it provides a dedicated pathway that prevents cable congestion, minimises physical stress on fibres, and facilitates efficient cable management.

Whether you are setting up a new data centre or upgrading an existing one, HellermannTyton's Fibre Duct Raceway offers unmatched versatility and reliability.



## Why choose our system?

### Superior Cable Protection

The HellermannTyton Fibre Duct Raceway system is designed to protect your optical fibre cables from physical damage, accidental disconnections, and other environmental factors. The enclosed pathway ensures that your cables remain intact, preserving signal integrity and reducing the risk of network downtime.

### Enhanced Organisation and Accessibility

HellermannTyton's Fibre Duct Raceway provides a structured and orderly environment for your fibre optics, making maintenance and upgrades straightforward and hassle-free. Easy access points along the raceway enable quick and efficient cable management, saving you time and effort.

### Available in 7 Different Sizes

HellermannTyton's Fibre Duct Raceway is available in a variety of sizes to suit any data centre configuration: 50mm, 100mm, 220mm, 300mm, and 600mm wide. This range ensures that you have the perfect fit for your specific needs, providing flexibility and adaptability for any setup.

### Sustainable and Eco-Friendly

Made from fully recyclable Noryl material, HellermannTyton's Fibre Duct Raceway is a sustainable choice that supports your data centre's environmental goals. By choosing our product, you are investing in a solution that contributes to a greener future.

### Compliance and Safety Standards

HellermannTyton's Fibre Duct Raceway meets the highest safety and compliance standards, being LSZH (Low Smoke Zero Halogen), UL94-V0, RoHS compliant, and UL2024A rated. This ensures that your installation not only performs efficiently but also adheres to stringent safety regulations.

### Longer Straight-Duct Lengths

With straight duct lengths of 2m (6ft 7"), our product offers a 10% longer span compared to competitor products that are based on 6ft lengths. This translates to fewer joints and a more streamlined installation process.

### Tool-Free Installation

The innovative 'Push & Click' fixing method allows for faster and simplified installation without the need for tools. This feature reduces setup time and minimises disruption, enabling a quicker and more efficient deployment.

### Easily Adaptable for Future Changes

Designed with future-proofing in mind, our duct raceway system is easily adaptable for future moves, adds, and changes. This flexibility ensures that your cable management infrastructure can evolve seamlessly as your data centre grows and changes.

# System Components

Elevate Your Data Centre with HellermannTyton's Fibre Duct Raceway System. In today's data-driven world, the integrity and efficiency of your optical fibre network are critical to your success.

Our Fibre Duct Raceway offers the protection, organisation, and scalability needed to keep your data centre running at peak performance. Experience the difference with a solution designed to meet the highest standards of quality and innovation.

## Straight Duct Lengths

Solid Straight duct lengths are 2m (6ft 7") long as standard and can be supplied with or without lids. They come pre-punched at both ends ready to accept the push-fit couplers.

Straight duct lengths in 30, 50 & 100mm wide sizes can also be produced with side slots to be used in applications for multiple high volume vertical drops or within network cabinet racks or optical distribution frames to aid with high-density vertical patchcord management.



Pre-punched solid straight duct.



Pre-punched solid straight duct with lid.



Pre-punched side slot straight duct.

## Couplers

### Push-fit couplers

These couplers can be used on straight duct lengths that have pre-punched holes at each end. The coupler simply pushes onto the straight duct and clicks into the pre-punched holes. The joining duct length or routing accessory can then be pushed on and coupled. For lengths that are cut down to size new holes need to be punched in using the relative slotting tool.



Push-fit coupler.



Mechanical coupler.

### Mechanical couplers

These couplers can be used on both pre-punched duct lengths and accessories or with any lengths that have been cut down to size and no longer have the pre-punched holes. It is recommended the metal clips are tightened in place using a screwdriver.

## Horizontal Elbows

Horizontal elbows allow for change in horizontal routing direction and are available in 90°, 45° or 30° angles with or without lids.



90° Horizontal Elbow without Lid.



90° Horizontal Elbow with Lid.



45° Horizontal Elbow with Lid.



30° Horizontal Elbow with Lid.



## T-Junctions

### Horizontal T-Junctions

Horizontal tees are used to create breakouts and diverse routing along horizontal pathways. When coupled with vertical elbows, they can also create a drop-off method. Available with or without lids.



Horizontal Tee without Lid.



Vertical Tee without Lid - Retrofit.



Vertical Tee without Lid.



Vertical Tee with Lid.

### Vertical T-Junctions

Vertical tees are used to create drop-off points from the horizontal straight duct directly into racks, cabinets or patching frames. Available with or without lids. Retrofit models can be installed where there is existing fibre cables in place.

## Vertical Elbows

Vertical elbows allow for routing alteration to allow horizontal paths to evade obstacles or to allow joining of horizontal paths at different heights.

Available in up or down configuration across 90°, 45° or 30° angles, with or without lids. Retrofit models can be installed where there is existing fibre cables in place.



30° Vertical Elbow Up with Lid.



90° Vertical Elbow Up with Lid.



90° Vertical Elbow Down with Lid.



45° Vertical Elbow Up with Lid - Retrofit.

## Intersections

Intersections provide diverse routing between straight duct along horizontal pathways.

Reducer Intersections allow for the use of different sized straight duct length.



Intersection with Lid.



Intersection without Lid.



Reducer Intersection with Lid.

## End Caps & Outlets

A variety of end caps for closing off straight duct pathways are available. There are also end cap or outlet models that allow for integration

of additional cable management accessories such as cable glands or convoluted tubing.



End Cap.



End Cap with 2x 32mm Knockouts.



Outlet for 50mm Tubing.



End Support Bracket.

# Fibre Duct Raceway



## Duct Raceway Products

Straight Duct Lengths		11
Couplers		12
Elbows	Horizontal	12
	Vertical	13
T-Junctions	Horizontal	14
	Vertical	15
Intersections		14
Fibre Loop Storage		16
Adaptors		16
End Caps		17
Tubing		18
Reducers		19

## Drop-off Solutions

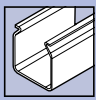
Side Spill Out Kit		20
	50x50mm	20
Side Drop Off Kits	100x50mm	21
	100x100mm	21
Express Top Outlet Drop off Kits	100x100mm	22
	100x100mm	23
High Capacity Duct Outlets	100x100mm	23
	220x100mm	23
Drop Off Components		24

## Mounting Solutions

Metal Mounting Kits	25
Suspension Kits	26
Underfloor Mounting Kits	26
Ladder Rack Mounting	27
Unistrut™ Mounting	27

## Tooling Components

	Standard	28
Duct Hole Punches	Hand Operated	29
	Hydraulic tool	30
Mitre Kit & Cut Out Jig		31



### Straight Duct Lengths

2 metres

#### Technical Description

Solid Straight duct lengths are 2m (6ft 7") long as standard and can be supplied with or without lids. They come pre-punched at both ends ready to accept the push-fit couplers.

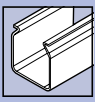
Straight duct lengths in 30, 50 & 100mm wide sizes can also be produced with side slots to be used in applications for multiple high volume vertical drops or within network cabinet racks or optical distribution frames to aid with high-density vertical patchcord management.



Variety of sizes available.

SIZE								
MM	30 X 30	50 X 50	100 X 50	100 X 100	220 X 100	300 X 100	600 X 100	
IN	1.25 X 1.25	2 X 2	4 X 2	4 X 4	8 X 4	12 X 4	24 X 4	
SOLID	No Lid	HT-FDR-TC1279-83	HT-FDR-TC1279-81	HT-FDR-TC1279-223	HT-FDR-TC1279-23	HT-FDR-TC1279-21	HT-FDR-TC1279-275	HT-FDR-TC1279-406
	Lid	HT-FDR-TC1279-83XA	HT-FDR-TC1279-81XA	HT-FDR-TC1279-223ASN	HT-FDR-TC1279-23ASN	HT-FDR-TC1279-21ASN	HT-FDR-TC1279-275A	
	Hinge	HT-FDR-TC1279-83A	HT-FDR-TC1279-81A	HT-FDR-TC1279-223A	HT-FDR-TC1279-23A	HT-FDR-TC1279-21A		
SLOTTED	Side exit	HT-FDR-TC1279-83SL	HT-FDR-TC1279-81SL	HT-FDR-TC1279-223SL	HT-FDR-TC1279-23SL			
	Lid	HT-FDR-TC1279-83SLXA	HT-FDR-TC1279-81SLXA	HT-FDR-TC1279-223SLASN	HT-FDR-TC1279-23SLASN			
	Hinge	HT-FDR-TC1279-83SLA	HT-FDR-TC1279-81SLA	HT-FDR-TC1279-223SLXA	HT-FDR-TC1279-23SLA			

Subject to technical changes. MOQs apply. Image for illustration purposes only.



## Couplers

### Push-fit and Mechanical

#### Technical Description

##### Push-fit couplers

These couplers can be used on straight duct lengths that have pre-punched holes at each end. The coupler simply pushes onto the straight duct and clicks into the pre-punched holes. The joining duct length or routing accessory can then be pushed on and coupled. For lengths that are cut down to size new holes need to be punched in using the relative hole punch tool.

##### Mechanical couplers

These couplers can be used on both pre-punched duct lengths and accessories or with any lengths that have been cut down to size and no longer have the pre-punched holes. It is recommended the metal clips are tightened in place using a screwdriver.



Push-fit Coupler



Mechanical Coupler

SIZE							
MM	30 X 30	50 X 50	100 X 50	100 X 100	220 X 100	300 X 100	600 X 100
IN	1.25 X 1.25	2 X 2	4 X 2	4 X 4	8 X 4	12 X 4	24 X 4
SLOTTED	HT-FDR-TC1279-98	HT-FDR-TC1279-73	HT-FDR-TC1279-226	HT-FDR-TC1279-27	HT-FDR-TC1279-25	HT-FDR-TC1279-320KIT	
SLOTLESS			HT-FDR-TC1279-459A	HT-FDR-TC1279-248A	HT-FDR-TC1279-250A	HT-FDR-TC1279-287A	HT-FDR-TC1279-410A

Subject to technical changes. MOQs apply. Image for illustration purposes only.

## Horizontal Elbows

### 90°, 45° and 30°

#### Technical Description

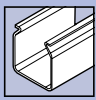
Horizontal elbows allow for change in horizontal routing direction and are available in 90°, 45° or 30° angles with or without lids.



30° elbow & cover 50x50.

SIZE							
MM	30 X 30	50 X 50	100 X 50	100 X 100	220 X 100	300 X 100	600 X 100
IN	1.25 X 1.25	2 X 2	4 X 2	4 X 4	8 X 4	12 X 4	24 X 4
30°	No Lid	HT-FDR-TC1279-137-30	HT-FDR-TC1279-77-30		HT-FDR-TC1279-47	HT-FDR-TC1279-45	
	Lid	HT-FDR-TC1279-137-30A	HT-FDR-TC1279-77-30A		HT-FDR-TC1279-47A	HT-FDR-TC1279-45A	
45°	No Lid	HT-FDR-TC1279-137-45	HT-FDR-TC1279-77-45		HT-FDR-TC1279-31-45	HT-FDR-TC1279-29-45	HT-FDR-TC1279-304
	Lid	HT-FDR-TC1279-137-45A	HT-FDR-TC1279-77-45A		HT-FDR-TC1279-31-45A	HT-FDR-TC1279-29-45A	HT-FDR-TC1279-304A
90°	No Lid	HT-FDR-TC1279-137	HT-FDR-TC1279-77	HT-FDR-TC1279-269	HT-FDR-TC1279-31	HT-FDR-TC1279-29	HT-FDR-TC1279-387
	Lid	HT-FDR-TC1279-137A	HT-FDR-TC1279-77A	HT-FDR-TC1279-269A	HT-FDR-TC1279-31A	HT-FDR-TC1279-29A	HT-FDR-TC1279-387A

Subject to technical changes. MOQs apply. Image for illustration purposes only.



### Vertical Elbows

90°, 45° and 30°

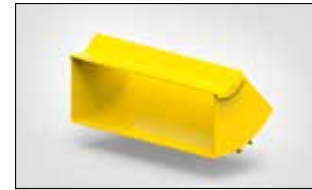
#### Technical Description

Vertical elbows allow for routing alteration to allow horizontal paths to evade obstacles or to allow joining of horizontal paths at different heights.

Available in up or down configuration across 90°, 45° or 30° angles, with or without lids. Retrofit models can be installed where there is existing fibre cables in place.



30° up & cover 100x100.



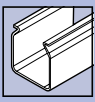
90° up & cover 300x100.



45° down & cover 220x100.

SIZE							
MM	30 X 30	50 X 50	100 X 50	100 X 100	220 X 100	300 X 100	600 X 100
IN	1.25 X 1.25	2 X 2	4 X 2	4 X 4	8 X 4	12 X 4	24 X 4
30° DOWN	No Lid	HT-FDR-TC1279-135-30	HT-FDR-TC1279-87-30		HT-FDR-TC1279-111-30	HT-FDR-TC1279-123-30	
	Lid	HT-FDR-TC1279-135-30A	HT-FDR-TC1279-87-30A		HT-FDR-TC1279-111-30A	HT-FDR-TC1279-123-30A	
	Retro				HT-FDR-TC1279-111-30R	HT-FDR-TC1279-123-30R	
30° UP	No Lid				HT-FDR-TC1279-113-30	HT-FDR-TC1279-125-30	
	Lid				HT-FDR-TC1279-113-30A	HT-FDR-TC1279-125-30A	
	Retro				HT-FDR-TC1279-113-30R	HT-FDR-TC1279-125-30R	
45° DOWN	No Lid	HT-FDR-TC1279-135-45	HT-FDR-TC1279-87-45		HT-FDR-TC1279-111-45	HT-FDR-TC1279-123-45	HT-FDR-TC1279-285
	Lid	HT-FDR-TC1279-135-45A	HT-FDR-TC1279-87-45A		HT-FDR-TC1279-111-45A	HT-FDR-TC1279-123-45A	HT-FDR-TC1279-285A
	Retro				HT-FDR-TC1279-111-45R	HT-FDR-TC1279-123-45R	
45° UP	No Lid		HT-FDR-TC1279-143-45		HT-FDR-TC1279-113-45	HT-FDR-TC1279-125-45	HT-FDR-TC1279-283
	Lid		HT-FDR-TC1279-143-45A		HT-FDR-TC1279-113-45A	HT-FDR-TC1279-125-45A	HT-FDR-TC1279-283A
	Retro		HT-FDR-TC1279-143-45R		HT-FDR-TC1279-113-45R	HT-FDR-TC1279-125-45R	
90° DOWN	No Lid	HT-FDR-TC1279-135	HT-FDR-TC1279-87	HT-FDR-TC1279-236	HT-FDR-TC1279-111	HT-FDR-TC1279-123	HT-FDR-TC1279-193
	Lid	HT-FDR-TC1279-135A	HT-FDR-TC1279-87A	HT-FDR-TC1279-236A	HT-FDR-TC1279-111A	HT-FDR-TC1279-123A	HT-FDR-TC1279-193A
	Retro		HT-FDR-TC1279-87R	HT-FDR-TC1279-236R	HT-FDR-TC1279-111R	HT-FDR-TC1279-123R	
90° UP	No Lid	HT-FDR-TC1279-247	HT-FDR-TC1279-143	HT-FDR-TC1279-246	HT-FDR-TC1279-113	HT-FDR-TC1279-125	HT-FDR-TC1279-298A
	Lid	HT-FDR-TC1279-247A	HT-FDR-TC1279-143A	HT-FDR-TC1279-246A	HT-FDR-TC1279-113A	HT-FDR-TC1279-125A	HT-FDR-TC1279-298KIT
	Retro	HT-FDR-TC1279-247R	HT-FDR-TC1279-143R	HT-FDR-TC1279-246R	HT-FDR-TC1279-113R	HT-FDR-TC1279-125R	
90° Up & Down				HT-FDR-TC1279-39A	HT-FDR-TC1279-37A		

Subject to technical changes. MOQs apply. Image for illustration purposes only.

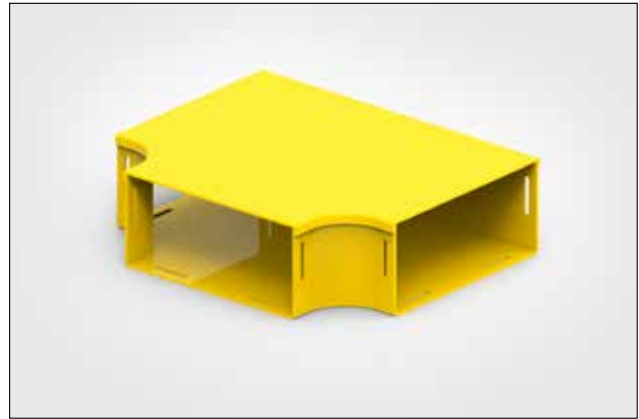


## Horizontal T-Junctions

### Standard and Reducers

#### Technical Description

Horizontal tees are used to create breakouts and diverse routing along horizontal pathways. When coupled with vertical elbows, they can also create a drop-off method. Available with or without lids.



Horizontal tee & cover 220x100.

SIZE								
MM		30 X 30	50 X 50	100 X 50	100 X 100	220 X 100	300 X 100	600 X 100
IN		1.25 X 1.25	2 X 2	4 X 2	4 X 4	8 X 4	12 X 4	24 X 4
STD	No Lid	HT-FDR-TC1279-115	HT-FDR-TC1279-75	HT-FDR-TC1279-224	HT-FDR-TC1279-03	HT-FDR-TC1279-01	HT-FDR-TC1279-279	HT-FDR-TC1279-412
	Lid	HT-FDR-TC1279-115A	HT-FDR-TC1279-75A	HT-FDR-TC1279-224A	HT-FDR-TC1279-03A	HT-FDR-TC1279-01A	HT-FDR-TC1279-279A	
REDUCE 100mm	No Lid						HT-FDR-TC1279-316A	
	Lid						HT-FDR-TC1279-398A	
REDUCE 220mm	No Lid					HT-FDR-TC1279-09A		
	Lid					HT-FDR-TC1279-393A		

Subject to technical changes. MOQs apply. Image for illustration purposes only.

## Intersections

### Standard and Reducers

#### Technical Description

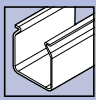
Intersections provide diverse routing between straight duct along horizontal pathways.



Reduction cross & cover 100x50.

SIZE							
MM		50 X 50	100 X 50	100 X 100	220 X 100	300 X 100	600 X 100
IN		2 X 2	4 X 2	4 X 4	8 X 4	12 X 4	24 X 4
STD	No Lid	HT-FDR-TC1279-139	HT-FDR-TC1279-234	HT-FDR-TC1279-71	HT-FDR-TC1279-61	HT-FDR-TC1279-300	HT-FDR-TC1279-416
	Lid	HT-FDR-TC1279-139A	HT-FDR-TC1279-234A	HT-FDR-TC1279-71A	HT-FDR-TC1279-61A	HT-FDR-TC1279-300A	
REDUCE 100mm	No Lid				HT-FDR-TC1279-65	HT-FDR-TC1279-396	
	Lid				HT-FDR-TC1279-65A	HT-FDR-TC1279-396A	
REDUCE 300mm	No Lid				HT-FDR-TC1279-331		
	Lid				HT-FDR-TC1279-331A		

Subject to technical changes. MOQs apply. Image for illustration purposes only.

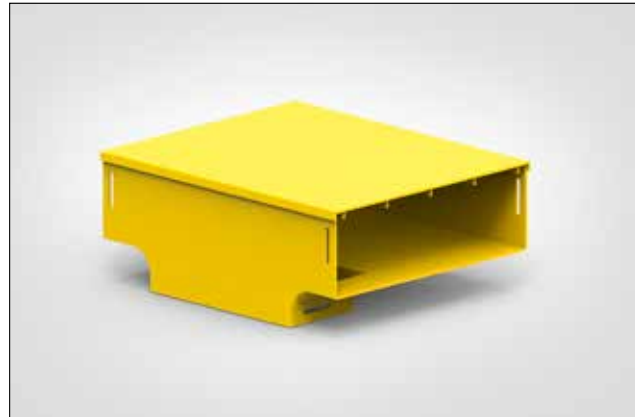


## Vertical T-Junctions (downspouts)

**No lid, lid or retrofit**

### Technical Description

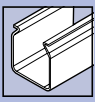
Vertical tees are used to create drop-off points from the horizontal straight duct directly into racks, cabinets or patching frames. Available with or without lids. Retrofit models can be installed where there is existing fibre cables in place.



Drop & cover 300x100

SIZE						
MM	30 X 30	50 X 50	100 X 50	100 X 100	220 X 100	300 X 100
IN	1.25 X 1.25	2 X 2	4 X 2	4 X 4	8 X 4	12 X 4
30 x 30	No Lid	HT-FDR-TC1279-167				
	Lid	HT-FDR-TC1279-167A				
	Retro					
50 x 50	No Lid	HT-FDR-TC1279-145				
	Lid	HT-FDR-TC1279-145A				
	Retro	HT-FDR-TC1279-145R				
100 x 50	No Lid			HT-FDR-TC1279-228		
	Lid			HT-FDR-TC1279-228A		
	Retro					
100 x 100	No Lid			HT-FDR-TC1279-63	HT-FDR-TC1279-11	
	Lid			HT-FDR-TC1279-63A	HT-FDR-TC1279-11A	
	Retro			HT-FDR-TC1279-63R	HT-FDR-TC1279-11R	
200 x 200	No Lid					HT-FDR-TC1279-277
	Lid				HT-FDR-TC1279-329A	HT-FDR-TC1279-277A
	Retro					

Subject to technical changes. MOQs apply. Image for illustration purposes only.

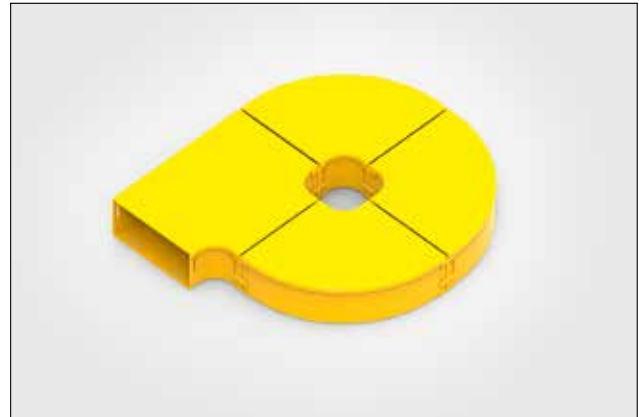


## Fibre Storage Loops

### Inline and Offset

#### Technical Description

Fibre storage loops are used to safely store excess optical fibre cable lengths and can be placed in any horizontal route or inside cabinets. They are available in inline or offset versions.



Offset fibre storage loop 220x100.

SIZE					
MM	50 X 50	100 X 50	100 X 100	220 X 100	300 X 100
IN	2 X 2	4 X 2	4 X 4	8 X 4	12 X 4
<b>INLINE</b>	HT-FDR-TC1279-209KIT	HT-FDR-TC1279-186KIT	HT-FDR-TC1279-208KIT	HT-FDR-TC1279-207KIT	HT-FDR-TC1279-485KIT
<b>OFFSET</b>	HT-FDR-TC1279-178KIT	HT-FDR-TC1279-195KIT	HT-FDR-TC1279-192KIT	HT-FDR-TC1279-191KIT	HT-FDR-TC1279-315KIT

Subject to technical changes. MOQs apply. Image for illustration purposes only.

## Adaptors

### ADC and Panduit

#### Technical Description

Adaptors are used to connect parts from other products to the HellermannTyton Fibre Duct Raceway, ADC and Panduit ducts. Most other ducting brands can be slotted with a hole punch tool to suit one of our slotted joiners.

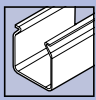


Adaptor kit right hand - 100x100mm to ADC 6"

SIZE		ADAPTOR						
MM	IN	ANGLE	ADC			PANDUIT		
			4"	6"	12"	4"	6"	12" x 4"
100 x 100	4 x 4	<b>Straight</b>	HT-FDR-TC1279-109KIT			HT-FDR-TC1279-173KIT		
		<b>LH</b>		HT-FDR-TC1279-473KIT				
		<b>Vertical</b>		HT-FDR-TC1279-307SLKIT				
		<b>RH</b>		HT-FDR-TC1279-472KIT				
220 x 100	8 x 4	<b>LH</b>		HT-FDR-TC1279-149KIT		HT-FDR-TC1279-487KIT		
		<b>RH</b>		HT-FDR-TC1279-150KIT		HT-FDR-TC1279-486KIT		
300 x 100	12 x 4	<b>Straight</b>			HT-FDR-TC1279-327KIT		HT-FDR-TC1279-492KIT	

Subject to technical changes. MOQs apply. Image for illustration purposes only.





## End Caps

### Slotted or slotless

### Technical Description

A variety of end caps for closing off straight duct pathways are available. There are also end cap or outlet models that allow for integration of additional cable management accessories such as cable glands or convoluted tubing.



Sealed 100x100.



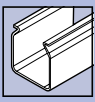
Dual 88mm tube outlets 220x100.



End support bracket 100x100.

SIZE							
MM	30 X 30	50 X 50	100 X 50	100 X 100	220 X 100	300 X 100	600 X 100
INCHES	1.25 X 1.25	2 X 2	4 X 2	4 X 4	8 X 4	12 X 4	24 X 4
SEALED	Slotted		HT-FDR-TC1279-227	HT-FDR-TC1279-57	HT-FDR-TC1279-56		
	Slotless			HT-FDR-TC1279-251	HT-FDR-TC1279-252	HT-FDR-TC1279-288	HT-FDR-TC1279-435
TUBE OUTLET	32mm	HT-FDR-TC1279-128D					
	50mm		HT-FDR-TC1279-127D				
	88mm			HT-FDR-TC1279-456			
	2 x 88mm				HT-FDR-TC1279-457		
CUT OUT	1 x 38mm		HT-FDR-TC1279-127C				
	1 x 17mm	HT-FDR-TC1279-128					
KNOCK OUTS	1 x 38mm		HT-FDR-TC1279-127B				
	2 x 20mm		HT-FDR-TC1279-127				
	2 x 32mm			HT-FDR-TC1279-57B			
	2 x 46mm			HT-FDR-TC1279-57C			
	END SUPPORT BRACKET		HT-FDR-TC1279-127F		HT-FDR-TC1279-57D		

Subject to technical changes. MOQs apply. Image for illustration purposes only.



### Tubing

#### Round or square

#### Technical Description

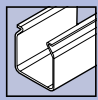
Tubing is used for feeding entering or exiting optical fibres from the fibre duct raceway into equipment racks. They are convoluted or ribbed, to allow adjustment if drops cannot be positioned exactly over or under equipment. Some are available with removable covers, or split for ease of cable installation.



Convoluted tube 50mm dia (1 metre length)

DESCRIPTION	Yellow	Black
Convoluted tube 63mm ID/ 65mm OD x 1.1 metres, c/w two joiners to connect to 75mm ID/88mm OD convoluted tube	HT-FDR-TC1279-480A	
Convoluted tube 50mm dia (1 metre length)	HT-FDR-TC1279-26Y	HT-FDR-TC1279-26
Convoluted tube 50mm dia (2 metre length)	HT-FDR-TC1279-53Y	HT-FDR-TC1279-53
Convoluted tube 50mm square (350mm length)	HT-FDR-TC1279-85YEL	HT-FDR-TC1279-85BLK
Openable convoluted tube with cover 50mm square (350mm length)	HT-FDR-TC1279-85KIT	
Convoluted tube split with cover 50mm dia (1 metre length)		HT-FDR-TC1279-350
Convoluted tube 38mm dia (2 metre length)		HT-FDR-TC1279-68
Convoluted tube 30mm square (350mm length)	HT-FDR-TC1279-88	
Convoluted tube 25mm dia (2 metre length)		HT-FDR-TC1279-54 *
Convoluted tube split 20mm dia (2 metre length)		HT-FDR-TC1279-100 *
Convoluted tube, flexible, 75mm ID/88mm OD x 2 metres long	HT-FDR-TC1279-458	
Convoluted tube, flexible, 75mm ID/88mm OD x 1 metres long	HT-FDR-TC1279-458-1	
Convoluted tube, flexible, 65mm ID/83mm OD x 2 metres long	HT-FDR-TC1279-471	
Convoluted tube, flexible, 65mm ID/83mm OD x 1 metres long	HT-FDR-TC1279-471-1	
Convoluted tube, flexible, 75mm ID/88mm OD x 1.15 metres long	HT-FDR-TC1279-479	
Convoluted tubing adaptor kit, 75mm ID/ 88mm OD to 44mm ID/ 50mm OD tubing	HT-FDR-TC1279-494KIT	

\*Grey. Subject to technical changes. MOQs apply. Image for illustration purposes only.



## Reducers

No lid or lid

### Technical Description

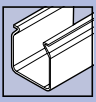
Reducers allow different size ducts to be joined together. They are available with or without covers.



Reducer left hand & cover 220x100 to 100x100.

SIZE 1 MM		50 X 50	100 X 50	100 X 100	100 X 100	220 X 100	300 X 100	600 X 100
SIZE 2 MM		30 X 30	50 X 50	50 X 50	4 100 X 50 X 4	100 X 100	220 X 100	300 X 100
STD	No Lid	HT-FDR-TC1279-97	HT-FDR-TC1279-238	HT-FDR-TC1279-91	HT-FDR-TC1279-240		HT-FDR-TC1279-281	HT-FDR-TC1279-408
	Lid	HT-FDR-TC1279-97A	HT-FDR-TC1279-238A	HT-FDR-TC1279-91A	HT-FDR-TC1279-240A		HT-FDR-TC1279-281A	
RIGHT HAND	No Lid					HT-FDR-TC1279-05		
	Lid					HT-FDR-TC1279-05A		
LEFT HAND	No Lid					HT-FDR-TC1279-07		
	Lid					TC1279-07A		

Subject to technical changes. MOQs apply. Image for illustration purposes only.



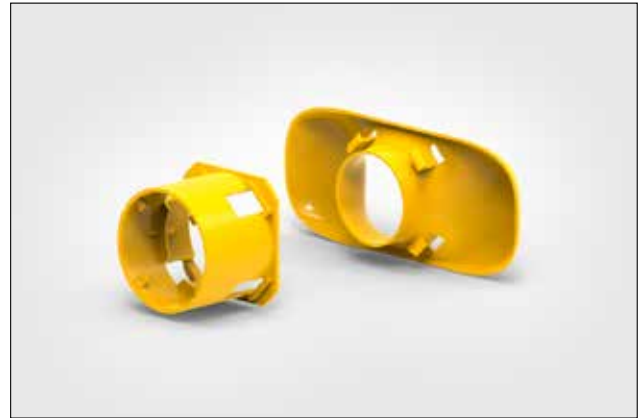
These components provide different methods of allowing fibres to enter or leave the fibre optic duct raceway. They can be purchased as kits or as individual items.

### Side Spill Out Kit

#### 100mm Duct

#### Technical Description

This drop-off assembly can be installed anywhere along the length of a 100mm high duct to allow up to 80 x 2mm optical fibre cords to leave the duct horizontally or vertically (if installed on the floor of the straight duct). Use cut out tool / hole saw HT-FDR-TC1279-604KIT with a drill to make a cut into the ducting.



Duct side spill out, straight outlet to convoluted tubing.

DESCRIPTION	Part No.
Duct side spill out, straight outlet to convoluted tubing.	HT-FDR-TC1279-602A
Duct side spill out, 90°, up / down / left / right to convoluted tubing.	HT-FDR-TC1279-609A

Subject to technical changes. MOQs apply. Image for illustration purposes only.

### Side Drop-Off Kits

#### 50 x 50 exit

#### Technical Description

50mm (2") duct drop-off solutions are suitable for 50 x 50mm, 100 x 50mm, 100 x 100mm, 220 x 100mm and 300 x 100mm straight duct lengths.

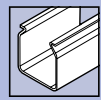
- Use tool HT-FDR-TC1279-50KIT to make cut-out in side of duct (or template 483A)
- Round convoluted tube, square convoluted tube and straight duct components ordered separately



Side drop-off 50mm.

DESCRIPTION	Part No.
50mm (2") side drop-off (outlet) to 50mm dia. round convoluted tube. Can fit approx. 80 x 2mm cables. Also includes duct ramp.	HT-FDR-TC1279-41KIT
50mm (2") side drop-off (outlet only). Can fit approx. 80 x 2mm cables	HT-FDR-TC1279-41A
Side drop-off to 50mm (2") square convoluted tube. Can fit approx. 100-150 x 2mm cables. Also includes duct ramp.	HT-FDR-TC1279-89KIT
Side drop-off (outlet) to 50mm square only. Can fit approx. 100-150 x 2mm cables.	HT-FDR-TC1279-89A
Side drop-off kit to 50mm duct raceway. Can fit between 100-150 x 2mm cables. Full kit for vertical drop (includes duct outlet, duct ramp, joiner and vertical elbow). Straight duct lengths ordered separately.	HT-FDR-TC1279-93KIT
Side drop-off outlet to 50mm duct raceway. Can fit between 100-150 x 2mm cables. Straight duct lengths, duct ramp, joiner and elbow ordered separately	HT-FDR-TC1279-93A

Subject to technical changes. MOQs apply. Image for illustration purposes only.



### Side Drop-Off Kits

#### 100 x 50mm exit

#### Technical Description

100 x 50mm duct drop-off solutions are suitable for 50 x 50mm, 100 x 50mm, 100 x 100mm, 220 x 100mm and 300 x 100mm straight duct lengths.

- Use tool TC1279-231KIT to make cut-out in side of duct.
- Straight duct components ordered separately

\* Down elbow not included in kit. Ordered separately - HT-FDR-TC1279-236A



Side drop-off 50mm.

DESCRIPTION	Part No.
Side drop-off to 100mm x 50mm duct raceway. Can fit approx. 250-300 x 2mm cables. Also includes duct ramp (HT-FDR-TC1279-294)	HT-FDR-TC1279-232KIT
Side drop-off (outlet only) to 100mm x 50mm duct raceway. Can fit between 250-300 x 2mm cables.	HT-FDR-TC1279-232A

Subject to technical changes. MOQs apply. Image for illustration purposes only.

### Side Drop-Off Kits

#### 100 x 100mm exit

#### Technical Description

100 x 100mm duct drop-off solutions are suitable for 100 x 50mm, 100 x 100mm, 220 x 100mm and 300 x 100mm straight duct lengths.

- Use tool TC1279-231 to make cut-out in side of duct.
- Straight duct components ordered separately

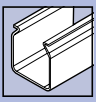
\* Down elbow not included in kit. Ordered separately - HT-FDR-TC1279-236A



Side drop-off to 100mm x 100mm duct raceway.

DESCRIPTION	Part No.
Side drop-off to 100mm x 100mm duct raceway. This drop can fit between 500-600 x 2mm cables. Use tool HT-FDR-TC1279-231 to make cut-out in side of duct.	HT-FDR-TC1279-111KIT
Side drop-off (outlet only) to 100mm x 100mm duct raceway. This outlet can fit between 500-600 x 2mm cables. Use tool HT-FDR-TC1279-231KIT or template 483A to make cut-out in side of duct.	HT-FDR-TC1279-218A

Subject to technical changes. MOQs apply. Image for illustration purposes only.



### Express Top Outlet (clip on) Drop-Off Kits

100 x 100mm exit

#### Technical Description

100 x 100mm express top outlet drop-off solutions are suitable for 100 x 50mm, 100 x 100mm, 220 x 100mm and 300 x 100mm straight duct lengths. These style outlets simply clip onto the top of the duct raceway, providing an express outlet (drop) along a length of ducting. No slotting, bolting or cutting is required for installing these components onto the straight duct length.

#### Features and benefits

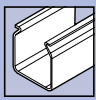
- Simply clips onto the top of a straight duct length
- Straight duct components ordered separately



Express top outlet drop-off to 100mm x 100mm duct raceway

DESCRIPTION	Part No.
With slots. Express top outlet drop-off to 100mm x 100mm duct raceway, horizontal. This drop can fit between 300-400 x 2mm cables.	HT-FDR-TC1279-290ASL
Express top outlet drop-off to 100mm x 100mm duct raceway, horizontal. This drop can fit between 300-400 x 2mm cables.	HT-FDR-TC1279-290A
With slots. Express top outlet drop-off to 100mm x 100mm duct raceway, vertical. This drop can fit between 300-400 x 2mm cables.	HT-FDR-TC1279-307ASL
Express top outlet drop-off to 100mm x 100mm duct raceway, vertical. This drop can fit between 300-400 x 2mm cables.	HT-FDR-TC1279-307A

Subject to technical changes. MOQs apply. Image for illustration purposes only.



### High Capacity Duct Outlets

#### 100 & 220mm outlets & kits

#### Technical Description

These duct outlet kits provide the ideal solution for high capacity optical fibre cords. Duct outlets can be placed anywhere along the duct and minimal time and effort is required to install these outlet components. This solution allows for quick installation, as less cuts are required and is also stronger, as the ribs of duct are not cut.

- Simply clips onto the top of a straight duct length
- Straight duct components ordered separately



Exploded view of high capacity outlet 100x100mm.

#### HT-FDR-TC1279-452A

High capacity outlet, 100mm x 100mm (4" x 4") 90°.

- Provides a 90° down bend (and break-out facility) at any point in a 100mm, 220mm or 300mm duct system.
- Can accept any standard 100mm x 100mm duct item using a joiner.



High capacity outlet 100x100mm.

#### HT-FDR-TC1279-452KIT

High capacity outlet kit, single, 100mm x 100mm (4" x 4") 90°.

- Provides a 90° down bend tube in a 100mm, 220mm or 300mm duct system.
- The 75mm ID/88 mm OD tube can carry either: 360 x 2mm cords; 210 x 2.4mm cords; or 160 x 3mm dia cords maximum.
- Use template 483A for cutout



High capacity outlet kit 100x100mm.

#### HT-FDR-TC1279-454A

High capacity outlet, 220mm x 100mm (8" x 4") 90°.

- Provides a 90° down bend (and break-out facility) at any point in a 100mm, 220mm or 300mm duct system.
- Can accept any standard 220mm x 100mm duct item using a joiner.
- Use template 483A for cutout



High capacity outlet kit 220x100mm.

#### HT-FDR-TC1279-454KIT

High capacity outlet kit, dual, 220mm x 100mm (8" x 4") 90°.

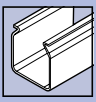
- Provides a 90° down bend for two large size convoluted tubes in a 100m, 220mm or 300mm duct system.
- Each 75m ID tube can carry up to 360 x 2mm cords.
- Use template 483A for cutout



High capacity dual outlet 220x100mm.

SIZE			
MM		100 X 100	220 X 100
IN		4 X 4	8 X 4
Outlet		HT-FDR-TC1279-452A	HT-FDR-TC1279-454A
KIT	Single	HT-FDR-TC1279-452KIT	
	Dual		HT-FDR-TC1279-454KIT

Subject to technical changes. MOQs apply. Image for illustration purposes only.



### Duct drop-off components and miscellaneous accessories

#### Radius Guide

Radius guide (pack of 10) to suit 30mm, 50mm, 100mm slotted duct.



Radius guide pack of 10.

#### Ramp Up

The ramp off is used to in conjunction with a drop off to prevent stressing fibre by maintaining a safe bending radius for the fibres being dropped off.



Small ramp up.

#### Outlet Trumpet

The break out assembly is used to provide a safe, exit for optical fibre cord/s to equipment, at any point in a ducting system.



Outlet Trumpet 50x50mm.

#### Universal Radius Guide

This guide is a simple means of providing a 30mm radius guide that eliminates fibre stress through bending.



Universal radius guide.

#### Pigtail Radius Guide Kit

The pigtail radius guide provides a 90° bend, but the guides are interlocking so that many can be joined to form U turns, circles & spirals as required (10 per kit).



Pigtail radius guide kit.

#### Duct Cable Separator Kit

Available for: 100mm, 220mm and 300mm duct.

The duct cable separator kit is installed longitudinally along the length of a duct run, to provide a separator or divider in the duct. The item is used to create separate compartments for different cords or cables.

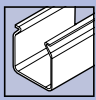


Duct cable separator kit.

DESCRIPTION	Part No.
Radius guide (pack of 10) to suit 30mm,50mm, 100mm slotted duct	HT-FDR-TC1279-212KIT
Small ramp up	HT-FDR-TC1279-42
Large ramp up	HT-FDR-TC1279-294
Outlet trumpet 50x50mm	HT-FDR-TC1279-93A
Outlet trumpet 100x100mm	HT-FDR-TC1279-218A
Outlet trumpet 100x220mm	HT-FDR-TC1279-330A
Outlet trumpet 100x300mm	HT-FDR-TC1279-379A
Universal radius guide	HT-FDR-TC1279-156
Pigtail radius guide kit	HT-FDR-TC1279-72KIT

Subject to technical changes. MOQs apply. Image for illustration purposes only.





### Mounting Kits

#### For metal or wall

#### Technical Description

HellermannTyton Fibre Duct Raceway mounting hardware is used to support the duct raceway from different structures. Provides vertical & horizontal mounting flexibility to steel-work or walls.

#### Features and benefits

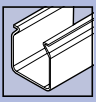
- Simply clips onto the top of a straight duct length
- Straight duct components ordered separately



Mounting bracket 100x100mm.

DESCRIPTION	Part No.
Mounting bracket kit for 30mm, 50mm	HT-FDR-TC1279-130KIT
Mounting bracket kit for 30mm, 50mm	HT-FDR-TC1279-78KIT
Wall mounting extension kit for 30, 50, 100mm	HT-FDR-TC1279-161KIT
Horizontal mounting kit, 50mm	HT-FDR-TC1279-168KIT
100mm duct support mounting bracket kit	HT-FDR-TC1279-103KIT
100mm duct wall mounting bracket	HT-FDR-TC1279-104KIT
220mm duct wall mounting bracket kit	HT-FDR-TC1279-133KIT
600mm x 100mm duct mounting bracket assembly	HT-FDR-TC1279-438A
Mounting bracket kit, heavy duty, wall & strut	HT-FDR-TC1279-183KIT
Side mounting bracket, heavy duty	HT-FDR-TC1279-303A
Wall mounting bracket	HT-FDR-TC1279-102
Wall mounting bracket kit, horizontal	HT-FDR-TC1279-126KIT
Mounting hardware duct "C" type brackets	HT-FDR-TC1279-147A

Subject to technical changes. MOQs apply. Image for illustration purposes only.



### Suspension Kits

#### 100, 220 or 300mm Duct

#### Technical Description

These suspension mounting bracket kits are used to attach either 300mm, 220mm or 100mm plastic duct to existing steelwork, from above.

Note: All metal brackets are either nickel plated or black powdercoat paint.

#### Features and benefits

- Simple, dual application
- Robust
- Economical



Suspension mounting bracket 300x100mm.

DESCRIPTION	SIZE DUCT (MM)	Part No.
100mm duct suspension bracket kit (including 12mm threaded rod)	100	HT-FDR-TC1279-107KITA
100mm duct suspension bracket kit (including 16mm threaded rod)		HT-FDR-TC1279-107KITB
100mm duct suspension bracket kit		HT-FDR-TC1279-107KIT
220mm duct suspension bracket kit (including 12mm threaded rod)	220	HT-FDR-TC1279-106KITA
220mm duct suspension bracket kit (including 16mm threaded rod)		HT-FDR-TC1279-106KITB
220mm duct suspension bracket kit		HT-FDR-TC1279-106KIT
300mm x 100mm duct system, mounting bracket kit, suspension type, 1/2" with threaded rod	300	HT-FDR-TC1279-297AKIT
300 x 100mm duct system, mounting bracket kit, suspension type, 5/8" with threaded rod		HT-FDR-TC1279-297BKIT
300mm heavy duty suspension duct mounting kit		HT-FDR-TC1279-297KIT

Subject to technical changes. MOQs apply. Image for illustration purposes only.

### Underfloor Mounting Kits

#### 100 or 220mm Duct

#### Technical Description

These brackets provide a means of attaching either a 220mm or 100mm duct system to (up to) 30mm (1") diameter tube or 25mm (1") square tubes in an under floor system.

#### Features and benefits

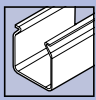
- Simple, dual application
- Robust
- Economical



Suspension mounting bracket 300x100mm.

DESCRIPTION	Part No.
Under floor mounting bracket	HT-FDR-TC1279-274
Vertical strut mounting kit	HT-FDR-TC1279-197KIT

Subject to technical changes. MOQs apply. Image for illustration purposes only.



## Ladder Rack Mounting

30, 50, 100, 220 or 300mm

### Technical Description

These clamps provide a means of attaching HellermannTyton duct systems to ladder racks.



Ladder rack mounting bracket 300x100mm.

DESCRIPTION	SIZE DUCT (MM)	Part No.
Ladder rack mount assembly - 30mm and 50mm	30 & 50	HT-FDR-TC1279-154KIT
Ladder rack mount kit - 100mm and 220mm	100 & 220	HT-FDR-TC1279-155KIT
Ladder rack mount kit - 100, 220, 300mm	100, 220 & 300	HT-FDR-TC1279-370KIT
Support bracket - 220mm x 100mm	220 x 100	HT-FDR-TC1279-572KIT

Subject to technical changes. MOQs apply. Image for illustration purposes only.

## Unistrut™ Mounting

100, 220 or 300mm Duct

### Technical Description

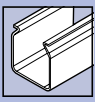
This bracket fits over 2" (50mm) square Unistrut™ section to provide a strong fixing position for: 300mm, 220mm and 100mm duct mounting brackets.



Mounting bracket adaptor.

DESCRIPTION	Part No.
Mounting bracket adaptor	HT-FDR-TC1279-171
Bracket to suit Siemens frame	HT-FDR-TC1279-170
Bracket to suit 41mm strut	HT-FDR-TC1279-59

Subject to technical changes. MOQs apply. Image for illustration purposes only.



### Duct Hole Punch

#### Foot Operated

#### Technical Description

The foot operated duct slotting tool is a means of making duct end hole punches, easily, accurately, and quickly. By using a foot operated system, a small effort is required to exert the large force necessary to make a hole punch. Both hands are free to hold the duct. The jaws are made of hardened carbon steel, for a long service life.

To operate, place duct side or end, within the tools cutting guides, hold duct down flush with top face of tool, and press foot operated lever, until a slot is made. Release the hole punch, using the foot operated release pedal. Remove and reposition duct for next slot. The hole punch tool cuts a slot in the duct end to suit a standard joiner (Part No's. TC1279-25, TC1279-27 & TC1279-320KIT); available separately. The kit includes one-foot operated slotting tool and a wheeled plastic box for storage and transport.



Duct hole punch - foot operated (with tool box).

#### Features and benefits

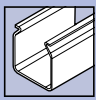
- Ducting can be easily aligned and positioned on the jig
- Fast and easy to use hole punching mechanism
- Compact, easy to transport unit which only weighs 8kg
- Steady and robust platform
- Ergonomically designed, no stress or heavy manual operation required as it only requires leg power
- Conforms to OH&S standards
- Repeatedly produces accurate hole punches
- Hole punches an end of duct in less than 30 seconds

DESCRIPTION	Part No.
Foot operated duct hole punch tool (with tool box)	HT-FDR-TC1279-500KIT
Tool box - suit foot hole punch (tool box only)	HT-FDR-TC1279-500-13

#### Suitable for Duct:

SIZE				
MM		100 X 100	220 X 100	300 X 100
IN		4 X 4	8 X 4	12 X 4
SOLID	No Lid	HT-FDR-TC1279-23	HT-FDR-TC1279-21	HT-FDR-TC1279-275
	Lid	HT-FDR-TC1279-23ASN	HT-FDR-TC1279-21ASN	HT-FDR-TC1279-275A
	Hinge	HT-FDR-TC1279-23A	HT-FDR-TC1279-21A	

Subject to technical changes. MOQs apply. Image for illustration purposes only.



### Duct Hole Punch

#### Hand Operated

#### Technical Description

The hole punch tool is used to make a small slot in the bottom and both sides at the end/s of duct. This process is a simple mechanical means of preparing a shortened length duct for connection to another standard part: e.g. elbow, cross connector, tees, adaptor assembly, duct end or drop offs, etc.

#### Features and benefits

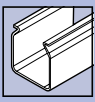
- Simple to use
- Mechanical shear type hole punch tool



Side hole punch tool 50mm.

SIZE						
MM	30 X 30	50 X 50	100 X 50	100 X 100	220 X 100	300 X 100
IN	1.25 X 1.25	2 X 2	4 X 2	4 X 4	8 X 4	12 X 4
SLOTS	Base	HT-FDR-TC1279-121A	HT-FDR-TC1279-118	HT-FDR-TC1279-51	HT-FDR-TC1279-51	
	Sides			HT-FDR-TC1279-230		

Subject to technical changes. MOQs apply. Image for illustration purposes only.



### Duct Hole Punch

#### Hydraulic tool

#### Technical Description

The hand held hydraulic duct slotting tool is a revolutionary design that takes the stress and effort out of hole punching duct.

Take advantage of this new method of safely and easily hole punch ducting, which will improve the efficiency of your installations and save you and your customer time and money.

#### Features and benefits

- No need to exert excessive force since the unit is hydraulic powered
- Safe & easy to use
- Ergonomically designed
- Compact design which is easy to transport and doesn't require excess storage space.
- Saves you time by slotting duct quickly
- Allows you to slot an end of duct in less than 1 minute
- Lightweight, only 2kg
- Repeatedly produces accurate hole punches
- Hole punches a variety of duct sizes from 100mm x 50mm up to 300mm x 100mm



Hand hydraulic tool 100mm.

DESCRIPTION	Part No.
100mm hand hydraulic tool	HT-FDR-TC1279-501
100mm hand hydraulic tool head	HT-FDR-TC1279-501-13S
100mm hand hydraulic tool kit with tool box	HT-FDR-TC1279-501KIT

#### Suitable for Duct:

SIZE				
MM		100 X 100	220 X 100	300 X 100
IN		4 X 4	8 X 4	12 X 4
SOLID	No Lid	HT-FDR-TC1279-23	HT-FDR-TC1279-21	HT-FDR-TC1279-275
	Lid	HT-FDR-TC1279-23ASN	HT-FDR-TC1279-21ASN	HT-FDR-TC1279-275A
	Hinge	HT-FDR-TC1279-23A	HT-FDR-TC1279-21A	

Subject to technical changes. MOQs apply. Image for illustration purposes only.

## Mitre Kit

### 30 - 300mm duct

#### Technical Description

Mitre boxes are used to provide a means of producing an accurate and straight cut on ducting, essential for correct alignment of the hole punch tools and joiners.



Mitre box 50mm & 30mm.

DESCRIPTION	Part No.
Mitre box duct,50mm, 30mm	HT-FDR-TC1279-118-07
Mitre box duct 300mm, 220mm, 100mm	HT-FDR-TC1279-MITRE

Subject to technical changes. MOQs apply. Image for illustration purposes only.

## Cut Out Jig

### 30 - 300mm duct

#### Technical Description

Cut out jig, for drop-offs and break out guides. Suitable for all ducts from 50mm to 300mm.



Cut out jig from 50 - 300mm.

DESCRIPTION	Part No.
Cut out jig, for drop-offs and break out guides. Suitable for all ducts from 50mm to 300mm	HT-FDR-TC1279-483A

Subject to technical changes. MOQs apply. Image for illustration purposes only.



## HellermannTyton

HellermannTyton Data Ltd – UK

Waterside House,  
Edgar Mobbs Way  
Northampton NN5 5JE

Tel.: +44 1604 707 420

Fax: +44 1604 705 454

Email: [sales@htdata.co.uk](mailto:sales@htdata.co.uk)

[www.htdata.co.uk](http://www.htdata.co.uk)