



## Corridor Cable Clips

2mm or 3mm

### Application / Product Description

These corridor cable clips (NanoClip™) are barely visible when fitted and provide a neat and tidy finish.

They are designed to fit fibre optic cables and all other small diameter cables.

Safe and 18th Edition compliant, they are CE & CA certified. 90 & 120 minute fire resistant, they meet the BSI and DIN classifications and are suitable for indoor use. Corrosion resistant and UV stable, they can be used outdoor.

Manufactured in spring steel, the barbed design grips better for a secure fixing on the wall. No plus, screws or washers are needed.

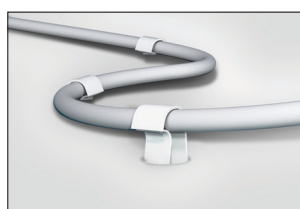
The corridor cable clip supports a maximum tensile load of up to 3.7kg depending on the type of substrates.

Hole diameter will vary depending on the type of substrates: 3mm for softer substrates like plaster or plasterboards and 3.5-4.5mm for harder substrates like timber, masonry or concrete. A spacing of 300mm between each cable clip is recommended.

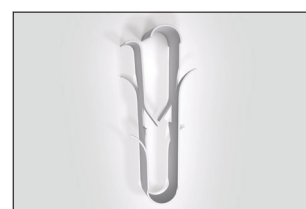
Three easy step installation: drill a hole in your wall (16mm depth), insert the cable into the open side of the clip and push the closed side of clip into the wall.



Corridor Cable Clip shown in white.



Corridor Cable Clip shown in situ.



Single Corridor Cable Clip shown in white.

### Features and Benefits:

- No plugs, screws or washers needed
- 18th Edition Compliant
- Fire-resistant >1200°C
- BSEN 50200 120 minutes fire time
- DIN 4102-12 DIN 90 minutes fire time
- Corrosion Resistant & UV Stable
- Available in white
- Two sizes for 2mm or 3mm cable
- Sold in packs of 100

Part Codes	Description
FFO-C2CLIPS/100	Corridor Cable clip 2.0mm – Pack of 100
FFO-C3CLIPS/100	Corridor Cable clip 3.0mm – Pack of 100

#### 1. Drill hole:

Drill a hole in your substrate.

We suggest a Ø3mm hole at a depth of 16mm.



#### 2. Insert cable:

Insert the cable into the open side of the clip.

Make sure it stays seated in the side with the OPENING.



#### 3. Push in:

Push it into the wall.

Insert with the CLOSED area of the clip facing into the wall.

