

Internal Corridor Box (ICB)

SC SX / LC DX

Application / Product Description

The Internal Corridor Box provides a customer connection point within an MDU environment. The ICB allows a multi-fibre cable with a maximum diameter of 2.8mm to be routed along a corridor. The midspan capability enables a single fibre to be dropped off at each customer location allowing the remainder of the cable to feed additional customer connections.

Up to 2m of cable can be stored in the enclosure (or 4m if the cable jacket and aramid yarn are removed) for a friendly fibre preparation at a nominal working height of 1m.

The ICB is designed for horizontal or vertical installation with 4 entry/exit ports (2 at the top and 2 at the bottom of the base). This allows the corridor cable to pass through (inline) from the top or from the bottom or to enter and exit via one of the ports.

Fibre cable retaining clips ensure the fibres remain secure once installed and adhere to the minimum bend radius of 7.5mm. Two rear-entry holes allow the trouble-free installation of the apartment reel cable through the wall behind the box.

The ICB is manufactured in a mix of Polycarbonate and Acrylonitrile Butadiene Styrene (PC-ABS) material that attains the UL94 V0 standard. A fire-resistant metal clip is fitted inside to comply with the current IET Wiring Regulations.

The clip-on cover is designed to work for installations on uneven surfaces. A 55 x 15mm inset position allows for a customer logo to be moulded on the cover. Two slotted fixings enable perfect horizontal alignment.

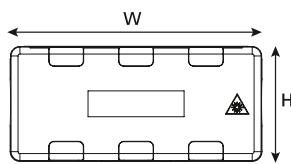
The standard box is configured for one adaptor (LC duplex or SC simplex) and one splice bridge (3A or ANT/Crimp) or splitter bridge. The provision for up to 12 splices allows cable section replacement in the event of installation damage. The ability to install standard PLC splitters is optional for multi-drop applications.

There is another version of the base designed for two adaptors in case of multiple broadband providers.

Features and Benefits:

- Maximum of 4 customer connections
- Up to 12 x 3A or ANT splices
- Small, low profile design
- Positive fibre management
- 4 corner cable access points
- Through the wall capability
- IP20 and IK07 rating
- Clipped on cover
- UL94 V0 rating
- Multi operator version

Technical Diagrams



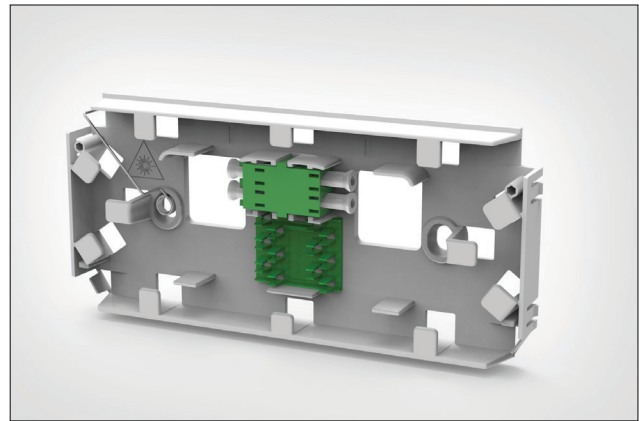
Front View



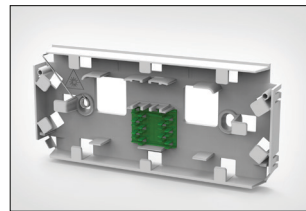
Side View



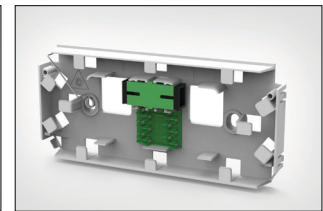
Base View



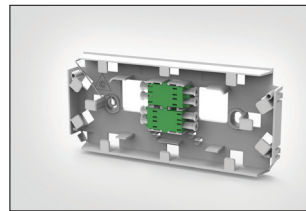
ICB (shown with 1 x 3A bridge and 1 x LC/APC DX adaptor).



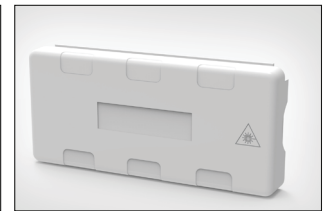
ICB (shown with 1 x 3A bridge).



ICB (shown with 1 x 3A bridge and 1 x SC/APC SX adaptor).

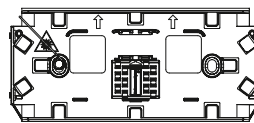


ICB (shown with 2 x 2 LC/APC DX adaptors).

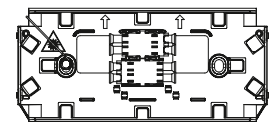


ICB (shown with lid).

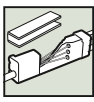
| Dimensions (mm) | H | W | D |
|----------------------------|---------------------------------|-----|---------------------------------|
| | 66 | 144 | 21 |
| Version | ICB-S | | ICB-C |
| Maximum number of adaptors | 1 x SC Simplex or 1 x LC Duplex | | 2 x SC Simplex or 2 x LC Duplex |
| Splice Capacity | 12 x 3A or ANT | | 2 x 3A |
| Splice Protector Length | Up to 50mm | | |
| Housing Material | Polycarbonate + ABS UL94-V0 | | |
| Colour | White | | |



Front View (ICB-S without lid)



Front View (ICB-C without lid)



Part Numbers

| Part Number | Description | UNS |
|--------------|---|-----------|
| ICB-SXXXX/WH | INTERNAL CORRIDOR BOX - 1 x 3A splice bridge, no adaptor (Max Capacity 1 x LCDX/SCSX) | 857-02845 |
| ICB-S1LXX/WH | INTERNAL CORRIDOR BOX - 1 x 3A splice bridge, 1 x LC/PC DX adaptor | 857-02847 |
| ICB-S1AXX/WH | INTERNAL CORRIDOR BOX - 1 x 3A splice bridge, 1 x LC/APC DX adaptor | 857-02848 |
| ICB-S1SXX/WH | INTERNAL CORRIDOR BOX - 1 x 3A splice bridge, 1 x SC/PC SX adaptor | 857-02849 |
| ICB-S1VXX/WH | INTERNAL CORRIDOR BOX - 1 x 3A splice bridge, 1 x SC/APC SX adaptor | 857-02850 |
| ICB-S1A2P/WH | INTERNAL CORRIDOR BOX - 1 x 3A splice bridge, 1 x LC/APC DX adaptor, 2 x pigtails | 857-02851 |
| ICB-S1V1P/WH | INTERNAL CORRIDOR BOX - 1 x 3A splice bridge, 1 x SC/APC SX adaptor, 1 x pigtail | 857-02852 |
| ICB-CXXXX/WH | INTERNAL CORRIDOR BOX - No adaptor (Max Capacity 2 x LCDX/SCSX) | 857-02846 |
| ICB-C2AXX/WH | INTERNAL CORRIDOR BOX - 2 x LC/APC DX adaptors | 857-02853 |
| ICB-C2VXX/WH | INTERNAL CORRIDOR BOX - 2 x SC/APC SX adaptors | 857-02854 |
| ICB-C2A4P/WH | INTERNAL CORRIDOR BOX - 2 x LC/APC DX adaptors, 4 x pigtails | 857-02855 |
| ICB-C2V2P/WH | INTERNAL CORRIDOR BOX - 2 x SC/APC SX adaptors, 2 x pigtails | 857-02856 |

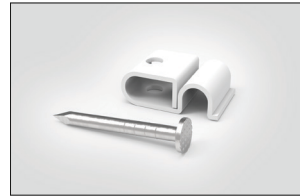
Accessories



Glue Cartridge (30cc)



Glue Dispenser



P-Clips (bag of 100)



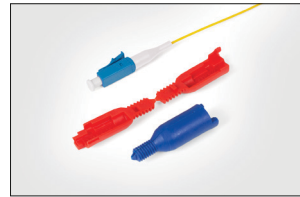
Nano Clips (2 or 3mm)



Cable Management Kit
Corner Bend Managers with
hole plugs & caps



Cable Scout Deluxe Set



Rod End Caps
LC Connector

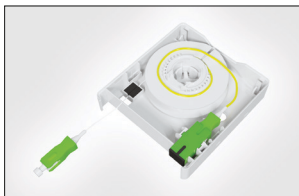


Indoor Corridor Cable
4F or 12F



Fan out Cable
4F or 12F

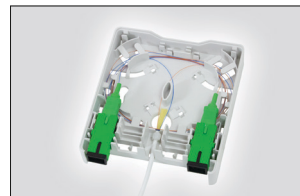
Associated Products



Faint Fibre Outlet (FFO)
SC/APC SX Adaptor



Fibre Wall Outlet (FWOA)
SC/APC SX Adaptors



**Pre-terminated Fibre Wall
Outlet (FWOA)**
SC/APC SX Adaptors