



### Mounting Bracket Comparison Table

PART CODE	Outdoor	Indoor	Application		Product										Loop Storage	Colour	Unique Feature
			Pole	Facade / Wall	AFN	FFE	MCCE	MDU									
								S1XS	S1	S2	S3	S4	S5				
<b>Single Enclosure Brackets</b>																	
MB-AFN/FFE-PB001	✓	✓	✓	✗	✓	✓	✗								✓	Black	- Fits 2 different enclosure sizes
MB-AFN/FFE-PWB-001	✓	✓	✓	✗	✓	✓	✗								✓		- Storage for up to 10m of Ultra Light Weight Cable
MB-AFN-PWB/BK-400MM	✓	✓	✓	✓	✓	✗	✗								✓		- Loop storage on inside of bracket - Easier to use loop basket after installation - Shorter than the 2 above brackets
<b>Multiple Enclosure Brackets (Pole ONLY, can not be wall mounted)</b>																	
MB-AFN-DUAL-BRKT requires 2 x MB-AFN-PWB/BK-400MM	✓	✗	✓	✗	✓	✗	✗								✓	Black	- Fits 2 different enclosure sizes - Maximises space on the pole by holding 2 brackets - Easier to use inside loop baskets after installation
MB-AFN/FFE-V-BRKT-V2	✓	✗	✓	✗	✓	✓	✗								✗		- Maximises space on the pole by holding 2 enclosures - Lightweight bracket
<b>MDU Rear Mounting Storage Brackets</b>																	
MDU-S1XS-RMSBRKT/GY	✓	✓	✗	✓			✓	✓							✓	Light Grey	- Hangs on back plate mounted on the wall allowing the removal of MDU - Up to 4m Drop Cable Storage
MDU-S1-RMSBRKT/GY	✓	✓	✗	✓		✓			✓						✓		
MDU-S2-RMSBRKT/GY	✓	✓	✗	✓	✓					✓					✓		
MDU-S3-RMSBRKT/GY	✓	✓	✗	✓							✓				✓		
MDU-S4-RMSBRKT/GY	✓	✓	✗	✓								✓			✓		
MDU-S5-RMSBRKT/GY	✓	✓	✗	✓									✓	✓	✓		

#### Single Enclosure Brackets



MB-AFN/FFE-PB001



MB-AFN/FFE-PWB-001



MB-AFN-PWB/BK-400MM



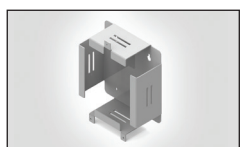
MB-AFN-DUAL-BRKT



MB-AFN/FFE-V-BRKT-V2

#### Multiple Enclosure Brackets

#### MDU Rear Mounting Storage Brackets



MDU-S1XS-RMSBRKT/GY



MDU-S1-RMSBRKT/GY



MDU-S2-RMSBRKT/GY



MDU-S3-RMSBRKT/GY



MDU-S4-RMSBRKT/GY



MDU-S5-RMSBRKT/GY