

### FRBU 16 / FST 13 Port Opening Tool Kit

#### Technical Description

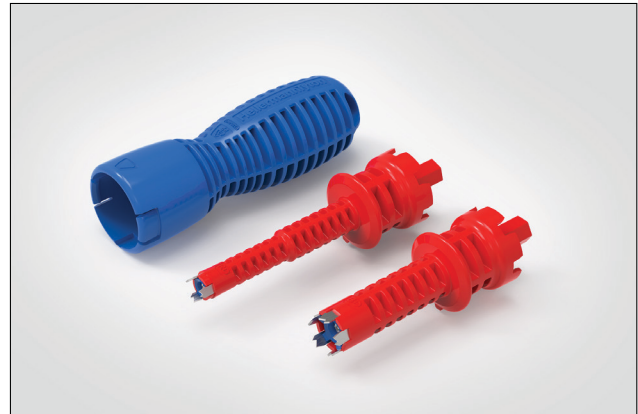
The FRBU / FST Port Opening Tool Kit provides a safe, quick and easy use solution for opening the round ports on the FRBU 16 Port and FST 13 Port Base Dome Closures.

The port opening tool kit is supplied with a single handle and 2 cutter assemblies for opening RD and BD ports (see base diagrams for port identification).

The cutter assemblies are replaceable parts which can be purchased separately once the original assemblies have reached the end of their life.

#### Features & Benefits

- Single Handle manages a range of cutter assemblies
- Quick and simple assembly changeover
- Smooth consistent cutting action
- Supplied with RD and BD Cutter Assemblies
- Replacement cutter assemblies available separately



Port Opening Tool Sizes RD and BD.



RD cutter assembly.



BD cutter assembly.

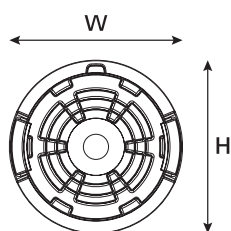
#### Technical Data

UNS No.	Part Code	Description	MOQ	Kit Content	
857-41121	PO-KIT-33062	Port Opening Tool Sizes RD and BD	1	Port Opening Tool Handle	1
				Cutter Assembly RD Port	1
				Cutter Assembly BD Port	1
857-41123	PO-CA-KIT-33064	RD Port Replacement Cutter Assembly	1	Cutter Assembly RD Port	1
857-41124	PO-CA-KIT-33065	BD Port Replacement Cutter Assembly	1	Cutter Assembly BD Port	1

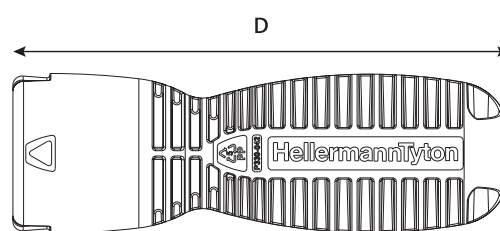
Dimensions (mm)	Height	Width	Depth
PO-CA-KIT-33064	36.5	36.5	137
PO-CA-KIT-33065	37	37	114
Port Opening Tool Handle	44	44	135

#### Technical Diagrams

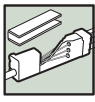
Port Opening Tool Handle



Handle (front view)

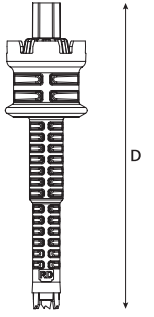


Handle (top view)

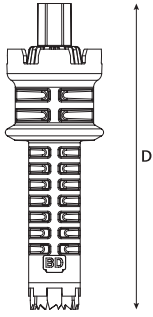


#### Technical Diagrams

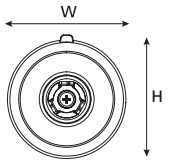
PO-KIT-33062



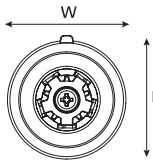
Cutter Assembly RD Port (top view)



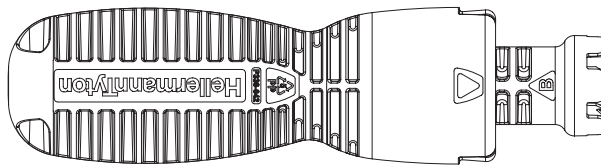
Cutter Assembly BD Port (top view)



Cutter Assembly RD Port (front view)

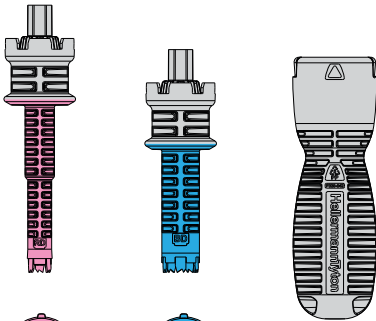


Cutter Assembly BD Port (front view)



Port Opening Tool Handle and Cutter Assembly

#### Base Compatibility



RD



BD

